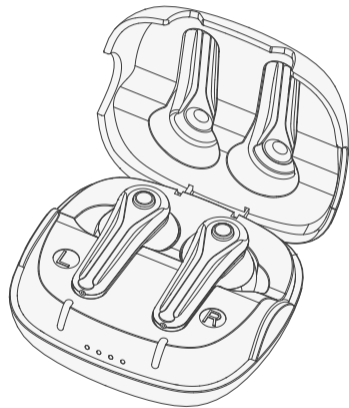


Operation instruction

Ballet CN430S B+



Please read this user manual carefully before using this product.

Please download and install “HA-Fit” APP first.



Contents

Warning	03
Product parameter	04
Packing list	05
Product graphic	06
Power on/off	07
Product charging	18
Multi-function keys	10
Hearing aid model introduction	11
Bluetooth function	12
Replace earplugs	14
Wearing a method	16
HA-Fit APP	17
Replace the leaf cover	21

Cleaning and maintenance	22
Troubleshooting guide	24
Matters needing attention	26
FCC warning statement	28

Warning

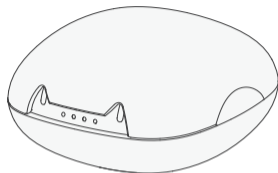
Hearing aids are devices for people with hearing loss. They are customized and fitted according to personal hearing conditions and listening habits. Therefore, it is not suitable for other people to use. Read this instruction carefully before using your hearing aid and follow its instructions. Improper operation may damage your hearing aid.

Product parameter

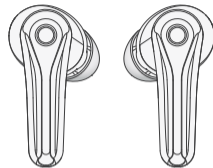
Max. OSPL90	110±4dB
HF Avg.OSPL90	106± 4dB
Max gain	40±5dB
HFA Gain	35±5dB
Noise Level	≤32dB
Frequency Range	F1≤200Hz F2≥5000Hz
Battery Current	≤3%
Total Distort	NA

	Hearing aid	Charging box
Charging Time	≤2H	≤2H
Endurance time	Hearing aid mode: ≥ 26H Audio mode: ≥ 5H	About 3 times

Packing list



Charging box



Hearing aid



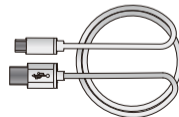
Earplugs



Cleaning brush



Cerumen kit

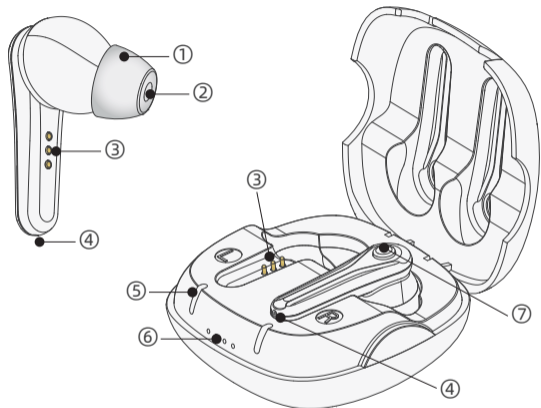


Charging cable



Specification

Product graphic



- ① Earplug ② Sound holes ③ Charging contacts
④ Microphone ⑤ Hearing aid charging indicator
⑥ Charging case charging indicator
⑦ Multi-function keys

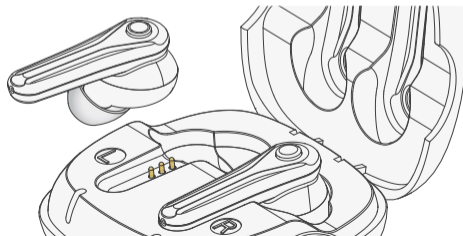
Power on/off

1. Power on

- Take the hearing aid out of the charging case and the hearing aid will automatically turn on.
- Long press the multi-function button 3S hearing aid to turn on

2. Power off

- Put the hearing aid into the charging case, and the hearing aid will automatically turn off
- Long press the multi-function button 6s hearing aid to turn off

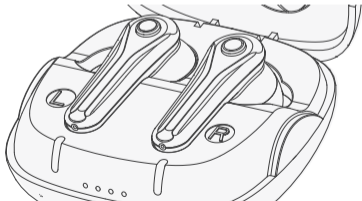


Product charging

1. Hearing aid charging

- When you hear the "low-battery" prompt tone when wearing hearing aids, the surface hearing aid is low in power, please charge it in time; Place the hearing aid into the charging box. The hearing aid will automatically start charging. You can whether the charging is complete according to the hearing aid complete according to the hearing aid charging indicator.

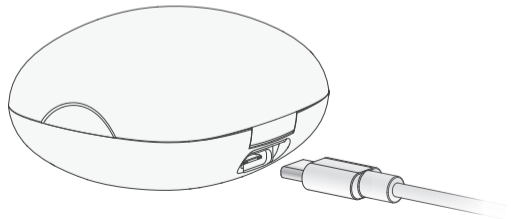
Charging condition	Light condition
In charge	The white lamp is long bright
Charge completion	The lights go out



Charging box charging

- The charging box has the power storage function and can charge the hearing aid. When the case runs out of power, it can be connected to a power source to charge the hearing aid and the case. The charging case has 4 indicators, and each light that lights up during charging means 25% full charge.

Indicator status	Battery capacity of charging box
☉ ⊗ ⊗ ⊗	0-25%
☉ ☉ ⊗ ⊗	26-50%
☉ ☉ ☉ ⊗	51-75%
☉ ☉ ☉ ☉	75-100%



Multi-function keys

To avoid complex operation, hearing aid designed a multi-function key, according to press the multi-function button in different time, can realize the different operation of hearing aids.

Press mode	Function
Click multi-function key	Switching volume
Long press the multi-function button for 2 seconds	Switch program
Long press the multi-function button for 3 seconds	power on
Long press the multi-function button for 6 seconds	power off
Long press the multi-function button for 10 seconds	Reset Bluetooth function

Hearing aid model introduction

Hearing aid with three procedures, long press the multi-functional key 2 seconds can cut the household program, according to the different prompt sound to identify the current program.

Cue tone	Program
"beep"	Quiet mode
"beep,beep"	Noise reduction mode 1
"beep,beep,beep"	Noise reduction mode 2

Program applicable environment

Program	Applicable environment
Quiet mode	Suitable for quieter environment
Noise reduction mode 1	Suitable for noisy environment
Noise reduction mode 2	Suitable for outdoor environment

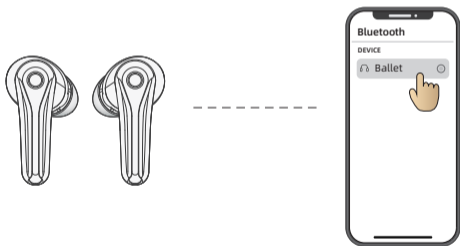
Bluetooth function

Hearing aids come with a Bluetooth feature that connects to a Bluetooth device to receive audio.

1. Pairing method

Step 1: Make sure the hearing aid is just turned on and the Bluetooth of the smart device is turned on.

Step 2: Open the Bluetooth list of smart devices, search "Ballet" for pairing, and you will hear "connected" when the connection is successful.



Note:

- The Bluetooth function of the hearing aid will automatically turn off if the Bluetooth is not connected for a long time.
- Automatic pairing without re-pairing after the first connection

2. Key operation in Bluetooth mode

Operation	Function
Click multi-function key	Play/pause a song; Answer/hang up the phone
Quick double click on the left hearing aid multi-function button	Next song
Quickly double click the right hearing aid multi-function button	Previous song

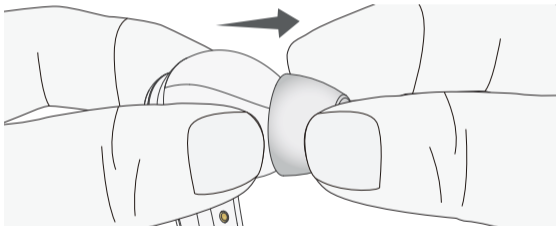
Note:

- Automatic switching of Bluetooth/hearing aid functions.
- When connected to Bluetooth, hearing aids automatically switch to Bluetooth mode when they receive audio transmissions.
- If you pause to stop music or end a call, the device will automatically enter the hearing aid function.
- When disconnected from the phone (Bluetooth off), the device will automatically enter the hearing aid function.

Replace earplugs

In order to make users have a better wearing experience, we will give away 3 pairs of earplugs of different sizes. You can try replacing earplugs when problems such as swelling of the ear canal and loud hearing aids occur.

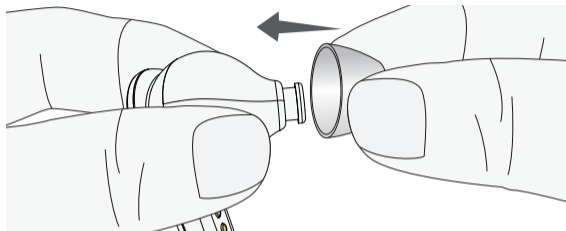
1. Pinch the body of the hearing aid with one hand and remove the inappropriate earplugs with the other hand.



2. Choose your size from the available earplugs.

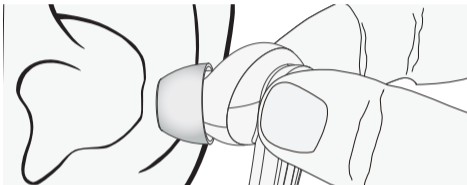


3. Insert the appropriate earplugs into the sound hole of the hearing aid to ensure that they are securely installed.



Wearing a method

1. Pinch the hearing aid with your thumb and index finger, and place the earplug side in the ear canal, insert the hearing aid into the ear canal comfortably.



2. Fine-tune the hearing aid position to adjust the hearing aid to a comfortable position.



HA-Fit APP

Please download and install "HA-Fit" APP first.



1.Connect APP

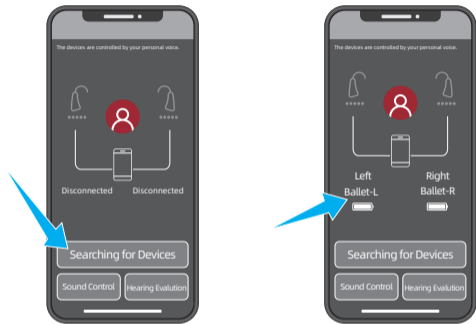
Step 1: Turn on your hearing aid.

Step 2: Turn on Bluetooth.

Step 3: Open the HA-Fit APP.

Step 4: Click the "Search Device" button.

After "searching for devices", the HA-Fit APP will automatically connect to the hearing aid, and the successful connection status is shown in the figure.



2. Hearing assessment

With the Hearing Hearing Evaluation module, you can quickly set up your hearing aids according to your hearing characteristics.

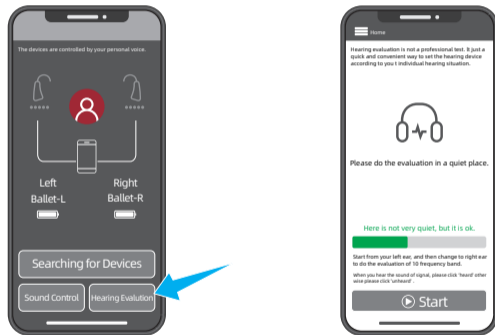
Step 1: Put on your hearing aid and turn it on.

Step 2: Please do the assessment in a quiet place.

Step 3: Click the "Listening Evaluation" button.

Step 4: Follow the prompts to complete your personal listening assessment.

Step 5: After completing your hearing evaluation, click the Auto-Optimize button and your hearing aids will be optimized based on your hearing score.

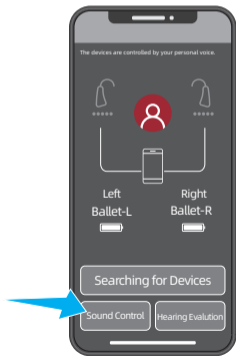


3.Sound control

The HA-Fit app lets you easily control your hearing aid on your Android or Apple device; The HA-Fit application covers key functions such as changing program, volume, and so on.

Step 1: Click the "Sound Control" button.

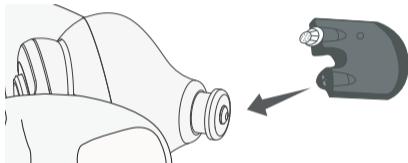
Step 2: Enter the sound control interface, you can easily control the hearing aids, you can adjust various parameters, volume, program, frequency band, noise reduction...



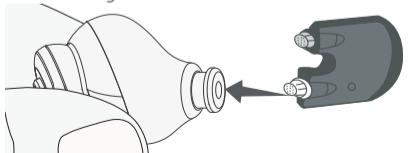
Replace the leaf cover

Cerumen filter which can effectively prevent cerumen into cause damage to hearing aids, hearing aids filter need to be replaced every once in a while.

1.Remove the earplugs, insert the filter removal tip into the hearing aid's sound hole, and pull out the old filter.



2.Insert the new filter hole of hearing aids, after confirm the card tight discarding the old filter.



Cleaning and maintenance

1. Routine maintenance

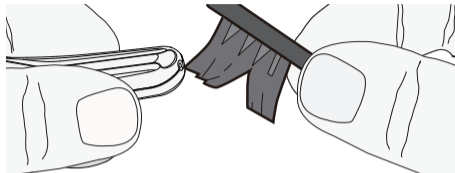
It is important to keep your equipment clean and dry. To avoid potential damage from excessive humidity or sweating, a drying kit is also recommended.

2. Care and maintenance

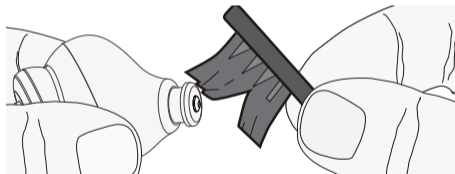
- Store in a safe area away from children and pets when not in use.
- Do not place hearing aids or charging sockets in hot areas such as stoves or in direct sunlight.
- Do not leave the device in a damp place, such as a bathroom, for long periods of time.
- Be careful not to poke the microphone hole with any sharp object to avoid damage.
- Do not disassemble yourself or attempt any repair. Doing so will void your warranty.
- Carefully protect the hearing aid from falling onto the ground or other hard surfaces.

3. Clean

- Periodically clean the sound inlet with a cleaning brush.



- Clean the sound outlet regularly with a cleaning brush.



Troubleshooting guide

Malfunction	Possible reasons for	The Solution
No sound	Low volume	Please increase the volume
	Equipment is out of power	Charge your hearing aid
	Microphone clogging	Clean microphone
	Cerumen filter is blocked	Replace cerumen strainer
The voice was low, weak, or unclear	The battery is low.	Charge your hearing aid
	The earplugs are too loose	Choose the right earmuffs to wear
	Earplugs or cerumen filters have wax in them	Clean dirt from ears and earplugs; replace New cerumen filter
	Hearing change	Contact your doctor
Abnormal bluetooth function	Hearing aids are connected to other devices	<ul style="list-style-type: none"> • Turn off Bluetooth for other devices and restart your hearing aid • Press and hold the multi-function button for 10s to restore Bluetooth Settings

Malfunction	Possible reasons for	The Solution
Abnormal bluetooth function	Your hearing aid has been connected to other smart devices	Turn off Bluetooth for other smart devices and reconnect the smart device you need to connect to
	The Bluetooth connection is unstable	Minimize the distance between hearing aids and smart devices
The hearing aid whistled in the charging box	The hearing aid was placed out of position	Remove the hearing aid from the charging box and place the hearing aid in the charging box according to the "L,R" mark
	The battery of the charging case is exhausted	Make sure the charging case is charging
Hearing aid into the charging box, the hearing aid charging indicator light is not bright	Bad contact of charging contact	Insert the hearing aid back into the charging dock
	The hearing aid was placed out of position	Check to see if your hearing aid is upside down

Matters needing attention

1. Do not use hearing aids if you have any of the following conditions:

- Congenital atresia external or malformation of any part of the ear canal.
- Erratic deafness, where the degree of hearing loss often fluctuates.
- Persistent headache, dizziness, earache, tinnitus or other symptoms that are not suitable for adaptation.
- Sudden hearing loss within the last 3 months; Rapid progressive deafness.
- Unilateral hearing loss or other acute ear disease.
- Fluid accumulation in the ear or frequent insertion (unbearable).
- Central deafness (central nervous system) or non-organic deafness.
- Patients with acute otitis externa and otitis media.
- Patients with acute and chronic suppurative otitis media (in the suppurative infection stage).
- Patients who are allergic to this product material.

2. Hearing aid daily precautions

- Do not immerse hearing aid in any liquid.
- Remove hearing aid before swimming or bathing.

- After swimming or washing, wait until your ear canal is dry before wearing your hearing aid.
- After taking off the hearing aid at night, it should be placed in the box with desiccant as far as possible to avoid light, high temperature and high humidity environment.
- The outer surface of the hearing aid should be kept clean, and wax from the earbuds should be removed daily.
- When you are not using your hearing aid, charge the product regularly to avoid damaging the battery.

FCC warning statement

Changes or modifications that are not explicitly approved by the compliant party may invalidate the user's authority to operate the equipment. This device has been tested to comply with Part 15 of the FCC Rules. These restrictions are intended to provide reasonable protection against harmful interference in residential installations. This equipment generates and radiates radio frequency energy, which may cause harmful interference with radio communications if not installed and used according to the instructions. However, there is no guarantee that interference will not occur in a particular installation. If the device does cause harmful interference with radio or television reception, which can be determined by turning the device off and on, the user is encouraged to try to correct the interference by doing one or more of the following: complying with the limitations of a Class B digital device:

- Reposition or reposition the receiving antenna.
- Increase the distance between device and receiver.
- Connect the device to a different socket from the circuit connected to the receiver.
- Consult with distributors or experienced radio/TV technicians.