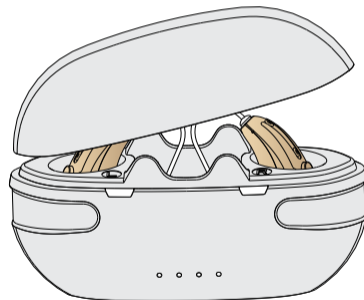


# Operation instruction

Discoverer CR430S B+



---

Enjoy hearing enjoy life

Version: 102022

Please read this user manual carefully  
before using this product.

Download and install the HA-Fit APP first.



# Catalogue

Warning .....	03
Product parameters .....	04
Product graphic .....	05
Hearing aid on/off .....	06
Product charge .....	07
Multi- function button .....	09
Hearing aid model introduction .....	10
Wearing a hearing aid .....	11
Replace hearing aid earplugs .....	12
Replace cerumen strainer .....	13
HA-Fit APP .....	15
Bluetooth function .....	19

Cleaning and maintenance .....	21
Troubleshooting guide .....	23
Matters needing attention .....	25
FCC warning statement .....	27

## Warning

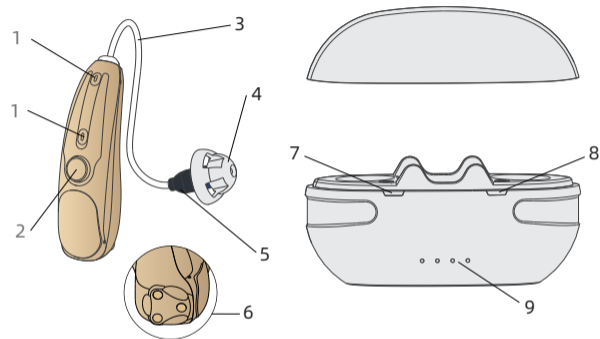
Hearing aids are devices designed for people with hearing loss. They are customized and installed based on individual hearing status and listening habits. Therefore, it is not suitable for other to use. Before using a hearing aid, please read this instruction manual carefully and follow the instructions. Improper operation may damage your hearing aid.

## Product parameters

Peak OSPL90(dB SPL)	≤117dB
OSPL90-HFA(dB SPL)	106dB
Peak Gain(dB )	≤48dB
HFA/FOG Gain(dB )	33±5dB
Equivalent input noise(dB)	≤32dB
Frequency response range	F1≤200Hz F2≥4000Hz
Harmonic distortion	NA
Battery drain	3%

	Hearing aid	Charging box
Charging time	≤2H	≤2H
Service time	Hearing aid mode: ≥ 16H Bluetooth mode: ≥ 3H	Charge a pair of hearing aids about 3 times

## Product graphic



1. Microphone port 2. Multi-function button 3. Sound tube  
 4. Earplug 5. Receiver 6. Charging base  
 7. Charge indicator on the left side of the hearing aids  
 8. Charge indicator on the right side of hearing aids  
 9. Charging box charging indicator

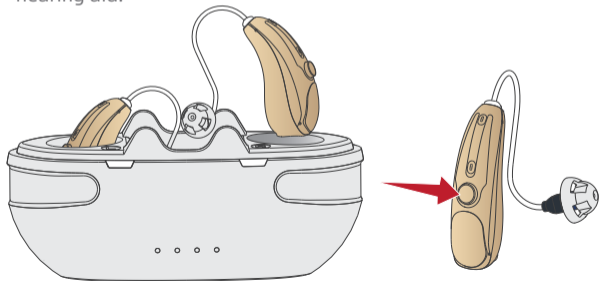
# Hearing aid on/off

## 1. power on

- Remove hearing aids from charging box, automatic open hearing aids.
- long press the multi-function button to open 3S hearing aids.

## 2. power off

- Will hearing aids in the charging box, hearing aids automatically shut down.
- Long press 6 seconds hearing aid multi-function close the hearing aid.



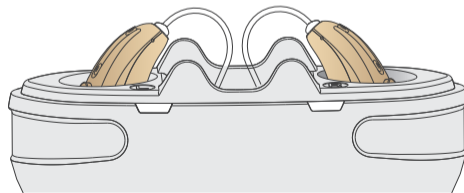
# Product charge

## 1. Charge your hearing aid

If you hear "low\_battery" prompt during a hearing aid, said hearing aid battery is insufficient, please recharge in time:

- Hearing aids to be included in the charging box, hearing aid will automatically start charging. Hearing aids charging according to hearing aids charge indicator charging status confirmation hearing aids.





Charging status	Light is state
In the charging	Charge indicator The white light is on
Charging completed	Charging light off

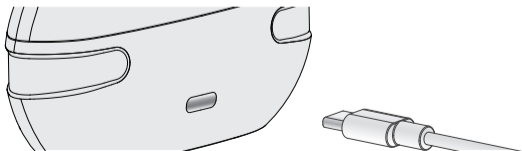


## 2. Charge the charging box

The charging case has a power storage function to charge hearing aids. When the charging indication of the charging case has only one light and flashes, it means that the charging case is not enough power, please charge it in time:

- The hearing aid is charged by connecting the charging box to a power source. The charging box has 4 charging indicators, which flash when charging the hearing aid charging indicator. When the 25% charging box is full of the charging box, the charging indicator will be long bright 1 grid.

Light is state	Battery capacity of charging box
	0-25%
	26-50%
	51-75%
	75-100%



## Multi-function button

To avoid complex operation, hearing aid designed a multi-function key, according to press the multi-function button in different time, can realize the different operation of hearing aids.

Press mode	Function
Click multi-function key	Switching volume
Long press the multi-function button for 2 seconds	Switch program
Long press the multi-function button for 3 seconds	power on
Long press the multi-function button for 6 seconds	power off
Long press the multi-function button for 10 seconds	Reset Bluetooth function

# Hearing aid model introduction

Hearing aid has three programs, long press the multi-functional key for 2 seconds to switch hearing aid program, according to different prompt sound recognition of the current program.

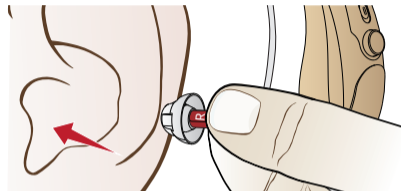
Cue tone	Program
"beep"	Quiet mode
"beep,beep"	Noise reduction mode 1
"beep,beep,beep"	Noise reduction mode 2

Program applicable environment

Program	Applicable environment
Quiet mode	Suitable for quieter environment
Noise reduction mode 1	Suitable for noisy environment
Noise reduction mode 2	Suitable for outdoor environment

# Wearing a hearing aid

Step 1: Pinch the receiver tightly with your hand and gently insert the earplug into the ear canal.



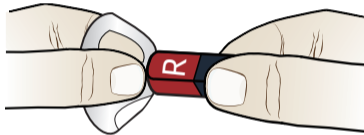
Step 2: Hang the hearing aid behind the ear and adjust the position of the hearing aid to a comfortable position.



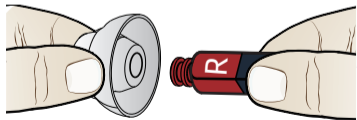
## Replace hearing aid earplugs

Inappropriate earplugs may cause howling and swelling, so we recommend that you replace them with appropriate earplugs.

Step 1: Turn the edge of the earplug upside down, hold the hearing aid receiver with one hand and pull the earplug down with the other.



Step 2: Select the earplug that fits your ear canal, align the receiver and insert it.



Note: After installing the earplugs, gently pull the earplugs to ensure that the earplugs are firmly installed and not easy to fall off.

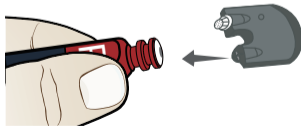
## Replace cerumen strainer

Inappropriate earplugs may cause the hearing aid to whistle and the ear canal to feel swollen, so we recommend that you choose the right earplugs for replacement.

Step 1: Remove earplugs first. See "Replacing Hearing aid Earplugs".



Step 2: Align the detachable end of the cerumen strainer kit with the hearing aid outlet hole and insert.





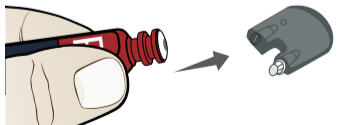
Step 3: Pull out the ceruminous strainer kit. Check to see if you have taken out the old ceruminous strainer. If not, repeat step 1.



Step 4: Insert the end of the cerumen strainer kit with the new cerumen strainer into the hearing aid sound hole.

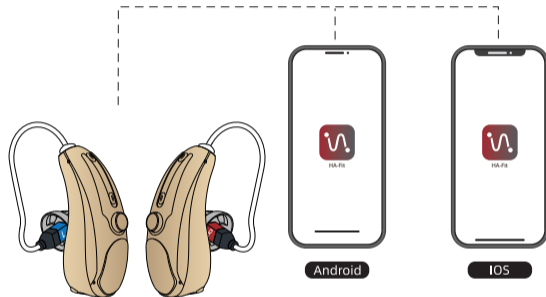


Step 5: Pull out the ceruminous strainer kit and check whether the ceruminous strainer has been installed.



## HA-Fit APP

Download and install the HA-Fit APP first.



### 1. Connect to the APP

Step 1: Turn the hearing aid on

Step 2: Enable the Bluetooth function of the smart device

Step 3: Open the HA-Fit APP

Step 4: Click the Search Device button

Step 5: After the "Searching for Devices" is completed, the HA-Fit APP will automatically connect to the hearing aid. The successful connection status is shown in the figure.



## 2. Hearing Evaluation

With the Hearing Hearing Evaluation module, you can quickly set up your hearing aids according to your hearing characteristics.

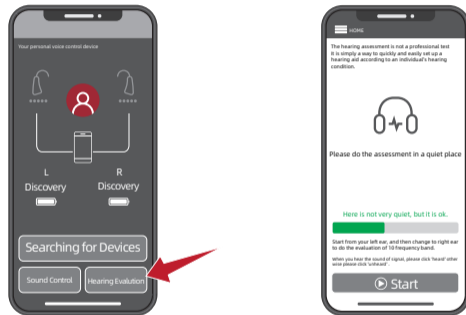
Step 1: Put on your hearing aid and make sure it's on

Step 2: Choose a quiet place

Step 3: Click the "Hearing Evaluation" button

Step 4: Follow the prompts in the APP to complete your personal listening assessment.

Step 5: After completing your listening assessment, click the Automatic Optimization button and your hearing aid will be optimized according to your listening score.



## 3. Sound Control

The HA-Fit app is designed to let you easily control your hearing aid remotely from your smart device. The HA-Fit application covers key functions such as switching programs.

Step 1: Click the Sound Control button.

Step 2: Enter the sound control interface, you can easily control the hearing aid, can adjust a variety of parameters, volume, program, frequency band, noise reduction.....



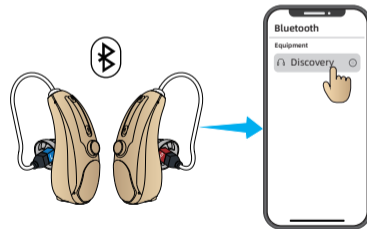
## Bluetooth function

Hearing aids come with Bluetooth, which connects to a Bluetooth device to receive audio.

### 1. Bluetooth pairing

Step 1: Ensure that the Bluetooth function of the hearing aid is enabled and the Bluetooth of the smart device is enabled.

Step 2: Open the Bluetooth list of smart devices, search for "Discovery" and click to pair. After successful connection, you will hear the "connected" prompt tone.



Note:

- The hearing aid's Bluetooth function automatically turns off when it is not connected for a long time.

- No re-pairing is required after the first successful connection.

## 2. Key operation in Bluetooth mode

Operation	Function
Click multi-function key	Play/pause a song; Answer/hang up the phone
Quick double click on the left hearing aid multi-function button	Next song
Quickly double click the right hearing aid multi-function button	Previous song

### Note:

- Automatic switching of Bluetooth/hearing aid functions.
- When connected to Bluetooth, hearing aids automatically switch to Bluetooth mode when they receive audio transmissions.
- If you pause to stop music or end a call, the device will automatically enter the hearing aid function.
- When disconnected from the phone (Bluetooth off), the device will automatically enter the hearing aid function.

# Cleaning and maintenance

## 1. Routine maintenance

It is important to keep your equipment clean and dry. To avoid potential damage from excessive humidity or sweating, a drying kit is also recommended.

## 2. Care and maintenance

- Store in a safe area away from children and pets when not in use.
- Do not place hearing aids or charging sockets in hot areas such as stoves or in direct sunlight.
- Do not leave the device in a damp place, such as a bathroom, for long periods of time.
- Be careful not to poke the microphone hole with any sharp object to avoid damage.
- Do not disassemble yourself or attempt any repair. Doing so will void your warranty.

### 3. Clean

- Clean the receiver with a brush.



- Clean with brush the microphone.



## Troubleshooting guide

Malfunction	Possible reasons for	The Solution
No sound	Low volume	Please increase the volume
	Equipment is out of power	Charge your hearing aid
	Microphone clogging	Clean microphone
	Cerumen filter is blocked	Replace cerumen strainer
The voice was low, weak, or unclear	The battery is low.	Charge your hearing aid
	The earplugs are too loose	Choose the right earmuffs to wear
	Earplugs or cerumen filters have wax in them	Clean dirt from ears and earplugs; replace New cerumen filter
	Hearing change	Contact your doctor
Abnormal bluetooth function	Hearing aids are connected to other devices	<ul style="list-style-type: none"><li>• Turn off Bluetooth for other devices and restart your hearing aid</li><li>• Press and hold the multi-function button for 10s to restore Bluetooth Settings</li></ul>

Malfunction	Possible reasons for	The Solution
Abnormal bluetooth function	Your hearing aid has been connected to other smart devices	Turn off Bluetooth for other smart devices and reconnect the smart device you need to connect to
	The Bluetooth connection is unstable	Minimize the distance between hearing aids and smart devices
The hearing aid whistled in the charging box	The hearing aid was placed out of position	Remove the hearing aid from the charging box and place the hearing aid in the charging box according to the "L,R" mark
	The battery of the charging case is exhausted	Make sure the charging case is charging
Hearing aid into the charging box, the hearing aid charging indicator light is not bright	Bad contact of charging contact	Insert the hearing aid back into the charging dock
	The hearing aid was placed out of position	Check to see if your hearing aid is upside down

## Matters needing attention

- Do not use hearing aids if you have any of the following conditions:
  - Congenital atresia external or malformation of any part of the ear canal.
  - Erratic deafness, where the degree of hearing loss often fluctuates.
  - Persistent headache, dizziness, earache, tinnitus or other symptoms that are not suitable for adaptation.
  - Sudden hearing loss within the last 3 months; Rapid progressive deafness.
  - Unilateral hearing loss or other acute ear disease.
  - Fluid accumulation in the ear or frequent insertion (unbearable).
  - Central deafness (central nervous system) or non-organic deafness.
  - Patients with acute otitis externa and otitis media.
  - Patients with acute and chronic suppurative otitis media (in the suppurative infection stage).
  - Patients who are allergic to this product material.
- Hearing aid daily precautions
  - Do not immerse hearing aid in any liquid.
  - Remove hearing aid before swimming or bathing.

- After swimming or washing, wait until your ear canal is dry before wearing your hearing aid.
- After taking off the hearing aid at night, it should be placed in the box with desiccant as far as possible to avoid light, high temperature and high humidity environment.
- The outer surface of the hearing aid should be kept clean, and wax from the earbuds should be removed daily.
- When you are not using your hearing aid, charge the product regularly to avoid damaging the battery.

## FCC warning statement

Changes or modifications that are not explicitly approved by the compliant party may invalidate the user's authority to operate the equipment. This device has been tested to comply with Part 15 of the FCC Rules. These restrictions are intended to provide reasonable protection against harmful interference in residential installations. This equipment generates and radiates radio frequency energy, which may cause harmful interference with radio communications if not installed and used according to the instructions. However, there is no guarantee that interference will not occur in a particular installation. If the device does cause harmful interference with radio or television reception, which can be determined by turning the device off and on, the user is encouraged to try to correct the interference by doing one or more of the following: complying with the limitations of a Class B digital device:

- Reposition or reposition the receiving antenna.
- Increase the distance between device and receiver.
- Connect the device to a different socket from the circuit connected to the receiver.
- Consult with distributors or experienced radio/TV technicians.