

尺寸: 240*321mm

切割线: 

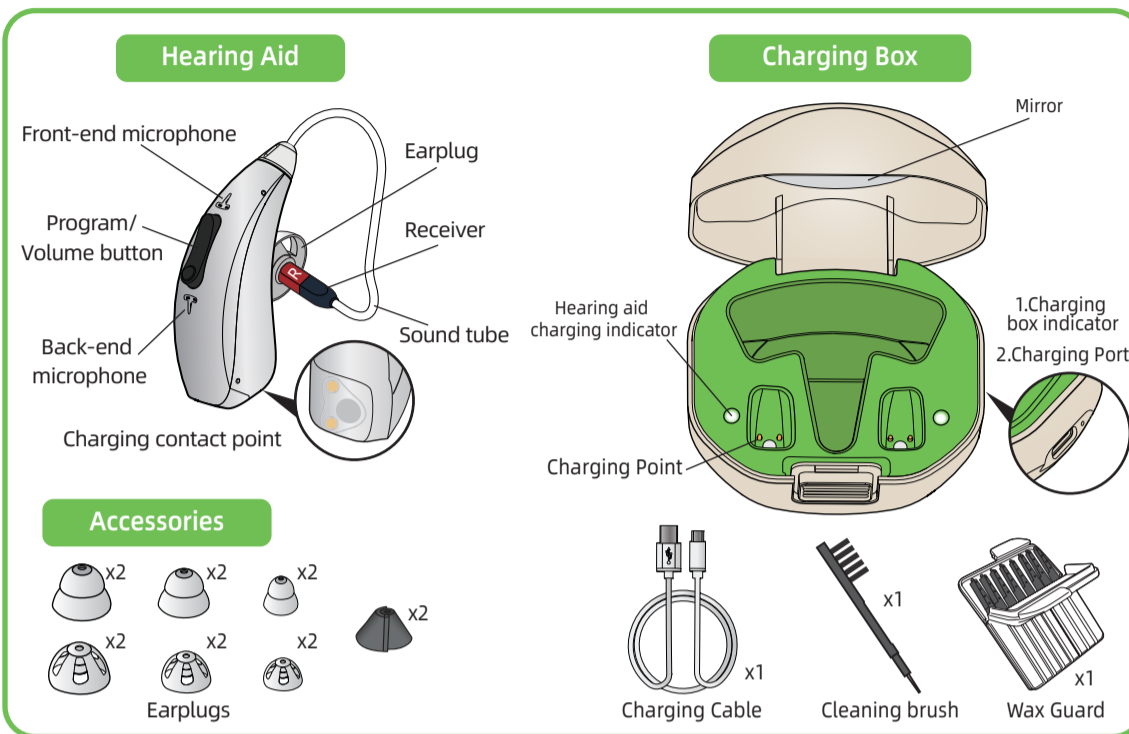
材质: 铜板纸125克

工艺: 双面印刷覆膜

Quick Operation Guide

Dragon-CR435S
RIC hearing aid

Please read the rehabilitation plan first

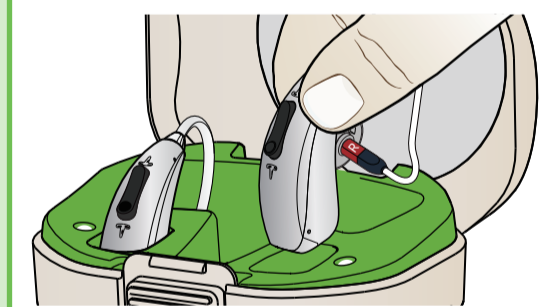


Technical Parameter			
Max.OSPL90	HF Avg.OSPL90	Max gain	HFA Gain
115±3dB	109±4dB	43±5dB	35±5dB
Noise Level	Frequency Range	Battery Current	Total Distortion
≤30dB	200-4000Hz	≤2mA	≤5%

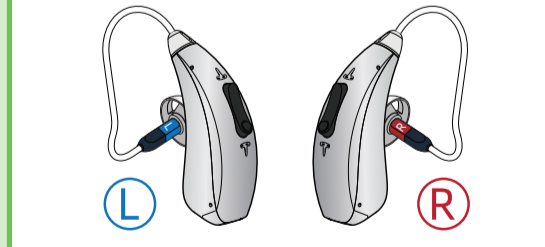
Power On/Off

- Power ON: Take the device out of the charging box.
- Power OFF: Put the device into the charging box.

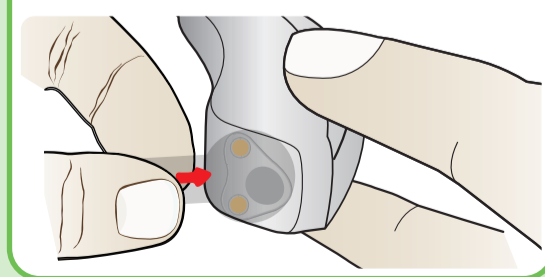
There is a startup announcement of hearing aids.



Please distinguish the right ear from the left ear according to the R/L logo on the external receiver. (L) is on the left and (R) is on the right.



Before use, please remove the insulating film label from the new hearing aid.



How to replace the earplugs

The hearing aids attach with M size earplugs at the first. If the earplugs cannot fit your ear canal, there will be beep. So please choose the suitable earplugs that fit your ear canal.

- Turn the edge parts over.
- Hold the base part and pull it off.
- Hold the receiver with your hand.
- Insert the earplug straight and insert it gently.
- And then try to pull the earplug lightly to make sure that it will not come off.

Do not pull the edge parts because it is thin. It may be damaged.

how to wear the hearing aids

- Gently insert the earplug into the ear canal.
- Place the hearing aid behind the ear. The curve of the sound tube should fit comfortably on top of your ear.
- Put the stabilizer bar into the outer bowl of the ear. It can be trimmed according to the size of your ears.

How to use

Volume adjustment and environmental mode switching.

Click the up button to increase the volume. Click the down button to decrease the volume. You will hear three beeps, indicating the highest or lowest volume.

long press the up button for 3 seconds, the program is in ascending order. One beep means mode 1 (normal mode). Two beeps mean mode 2 (noise reduction mode). Three beeps mean mode 3(outdoor mode). Long press the down button, the program will switch in descending order.

There is a memory function of the volume and modes. Restart the hearing aid, the hearing aid will automatically restore the last set volume level and program mode gear.

If you feel there is a whistling sound, please check if the earplug is tight. If it is untight, please replace one.

Low battery reminder

There are low battery warning signal beep sounds every one minute until the battery runs out. So please charge the hearing aids when you hear the beep.

How to charge

Connect the charging case and the charger with the Type-C cable, and plug the charger into the power stock. Put the hearing aid into the Charging Box, and make sure the charging points are in good contact condition. They will automatically start to charge. The whole charging process is around 2 hours.

When the charging box is charging, the indicator light at the left bottom will flash green. Green light will be always on when it is full charged. And there will be flashing blue light when the battery level is low.

	Hearing Aid	Charging Box
Battery Specifications	20mAh Lithium Battery	280mAh Lithium Battery
Charging Time	≤3h	≤3h
Rated Working Time	≥18h	10 Times for Single Unit 5 Times for Two Units

Troubleshooting

Problem	Possible Solution
Sound is distorted	① Decrease volume. ② Charge the product. ③ Clean the dome.
Sound is weak	① Charge the product. ② Increase volume. ③ Check the dome whether blocked or not.
The product emits whistling sounds	① Reinsert the Earplugs until it fits tightly. ② Decrease volume. ③ Clean the Earplugs.
The product does not work	① Change to different size of Earplugs. ② Check whether the microphone is damaged or not. ③ Charge the product.
Can't charge	① Clean the charging contacts. ② Gently twist the hearing aid to make sure the charging contacts are in good contact. ③ The charging cable is tightly connected with the charging port.

Consult your Hearing Care Professional or directly contact to us if the problem cannot be solved.

Maintenance

Keep the hearing aids clean at all time. After use, remove the earplug and clean the sound hole with the brush. Wipe off oil and moisture with tissue paper, etc., and keep the product dry.

- clean the sound hole with the brush.
- clean the microphone with a cleaning brush.

How to replace the earwax guard

Please replace the ear guard once every three months. Do not reuse your wax guard once used. The used wax guard filters cannot be attached tightly.

- Remove earplugs refer to "How to replace the earplugs".
- Rotate the removal end into the sound hole of the hearing aid.
- Pull out the old wax guard filter.
- Turn around the rod and insert the installation end (with new filters end) into the sound hole.
- Pull out the rod straight out to accomplish the replacement.

Notes and Tips

- This product is not waterproof, therefore the user must take care to prevent water from entering the product.
- Do not use in or near an X ray or MRI machine.
- If the hearing aids are out of use for a long time, please put them into the charging case and charge them every 1-2 months to avoid battery damage.
- The adapter provided in the package is only for the hearing aids, please do not use it to charge other devices especially cellphones.
- Store in a dry place with good ventilation and related humidity no higher than 80%, and free of corrosive gas.

All pictures are for reference only