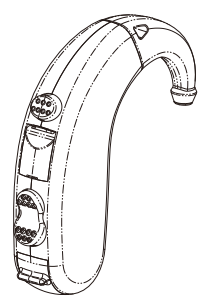


USER GUIDE



BEHIND-THE-EAR PERSONAL HEARING SYSTEM

Congratulations on the purchase of your new hearing instrument!

This booklet describes the features available for the BTE (Behind-The-Ear) models in the product line. The available options depend on the hearing instrument model; your hearing care professional will highlight the features of your particular hearing instrument.

Intended use

Hearing instrument is a kind of electronic devices which amplifies sound from your surroundings. It is used to help hearing impaired people recover hearing ability by compensating hearing loss. Your BTE is only one type of hearing instruments.

Precautions

For patients with middle ear infection, it's suggested not to wear hearing instrument until cured or follow the doctor's advice. Please consult your hearing healthcare professional first if you have any questions about your hearing instrument.

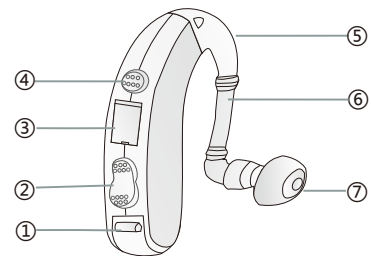
THE MANUFACTURER RESERVES THE RIGHT TO MODIFY THE TECHNICAL SPECIFICATIONS OF THIS PRODUCT WITHOUT ANY PRIOR NOTICE

2

Contents

Feature.....	4
Attach your hearing instrument parts.....	5
Inserting the battery.....	6
Turning on and off.....	7
Volume Control.....	8
Programme Selector.....	8
Pre-set Control (Trimmers).....	9
Change the battery.....	10
Battery Warning Information.....	11
Inserting your instrument.....	12
Removing your instrument.....	13
Daily Maintenance.....	13
Cleaning the ear mould(or eartip).....	14
General Precautions.....	15
Trouble shooting guide.....	16
Working condition.....	17
Technical data instrument.....	17

Feature



① Battery door	⑤ Earhook
② Volume control	⑥ Sound tube
③ Trimmer(s)	⑦ Dome
④ Programme button	

4

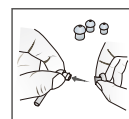
Operation

Attach your hearing instrument parts

Your hearing instrument consists of three basis parts: The hearing instrument case, the sound tube, and the dome.

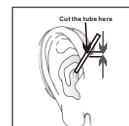
Attach the dome

Push the dome over the grooves on the tube to mount it.



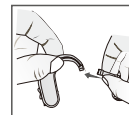
Cut the sound tube

The correct length of the tubing is determined by how much needs to be trimmed so that the tubing is relatively straight and not kinked. We recommend cutting a small amount (1 mm or 1/16th of an inch) at a time so that you do not cut the length too short.



Attach the sound tube

Hold the end of the sound tube in one hand and the hearing instrument in the other. Line up the sound tube on top and twist onto the adaptor that sticks out of the hearing instrument case

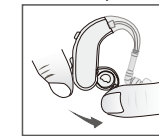


5

Inserting the battery

The hearing instrument use a size 13 Zinc-Air battery.

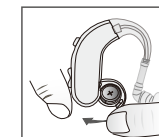
1. Open the battery compartment completely, using your fingernail to pull back on the small ridge located at the top of the door.



2. Insert the new one with the "+" (flat) side facing the "+" on the battery door. Make sure the battery has been placed correctly into the slot.



3. Close the battery door, the battery door should close very easily. Never use force to close the door as this may damage your hearing instrument.



NOTICE: When the battery door is completely closed, your hearing instrument is ready for use.

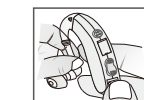
6

Turning on and off

Your hearing instrument is equipped with an on/off switch integrated into the battery compartment.

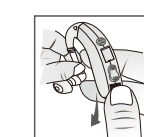
Turn on:

Turn your hearing instrument ON by closing the battery door.



Turn off:

Turn your instrument OFF by battery door downward to the first stop.



NOTICE:

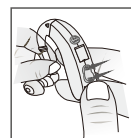
Turning your instrument off when you are not using it will increase the battery life.

At night, turn off your instrument and open the battery door completely. It will allow moisture in your instrument to evaporate and will increase the instrument's life span.

7

Volume Control

This BTE models have a volume control which allows you to set and control the volume manually. The rocker VC serves as the volume control. The volume control operates as described below:



Press up for increase the volume.

Press down for decrease the volume.

NOTICE:

Please note that your instrument has been fit by your hearing care professional and that your hearing loss requires a certain amount of amplification. This will also effect how much you are able to increase the volume on your instrument. Your instrument has function of volume resume. The instrument reverts to the previous setting of volume when powered on again.

Programme Selector

Your hearing instrument has a push button allowing you to use up to different separate listening programmes, each of them suitable for different situations.



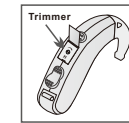
8

NOTICE:

1. When the hearing instrument is turned on, it will automatically be in program 1.
2. The additional settings which are pre-programmed for your specific needs are accessed by the memory switch. Each time you press the memory switch, the hearing instrument will move to the next program. The sequence is 1, 2, 1.
3. Your hearing instrument will alert to identify which program you are using. When you select program 1 you will hear one beep, program 2 will emit two beeps.
4. Please note that the programs are pre-set by your hearing healthcare professional or manufacturer.

Pre-set Control (Trimmers)

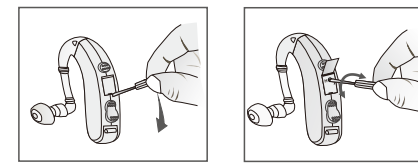
Pre-set controls are placed behind the cover on the back of the instrument. The cover should always remain closed to prevent dirt and moisture from entering the instrument. If the cover should accidentally fall off, contact your hearing care professional to obtain a replacement.



H-Trimmer

Used to eliminate noise, Turn anticlockwise for reduce low frequency then reduction noise.

9



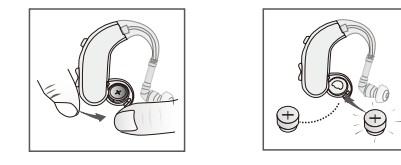
NOTICE:

The pre-set controls will have been adjusted by your hearing care professional during your fitting session. The setting of the controls is done according to the individual characteristics of your particular hearing loss.

Change the battery

Open the battery compartment completely, using your fingernail to pull back on the small ridge located at the top of the door. After removing the old battery, insert the new one with the "+" (flat) side facing the "+" on the battery door. Make sure the battery has been placed correctly into the slot. The battery door should close very easily. Never use force to close the door as this may damage your hearing

10



Always use a size 13 Zinc-Air battery. Please note that if the battery is weak, the hearing instrument performance will be reduced. Removing the battery when you are not wearing the instrument will help prevent corrosion of the battery contacts and prolong battery life.

Battery Warning Information

Batteries contain dangerous substances and should be disposed of carefully in the interest of your safety and for the environment.

Do NOT attempt to recharge batteries which are not specifically designated rechargeable as they may leak or explode.

Do NOT attempt to dispose of batteries by burning them.

Keep batteries away from small children and pets.

Do NOT place batteries in your mouth.

If swallowed, seek immediate medical attention.

11

Inserting your instrument

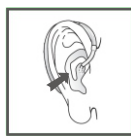
Open the battery door to turn the instrument off. Hold the ear mould (or eartip) between your thumb and index finger and position its "point" in your ear canal. Now, slide the ear mould(or eartip) all the way into your ear with a gentle, twisting movement. Insertion can be easier if you gently pull your ear back with your other hand.



Turn the top-part of the ear mould(or eartip) gently backwards and forwards so that it fits behind the fold of skin above your ear canal.



Place the hearing instrument behind your ear. Move the ear mould(or eartip) up and down and press lightly to ensure it is positioned correctly in the ear. Opening and closing your mouth can ease insertion. You will feel when the ear mould(or eartip) is positioned correctly.



When correctly positioned turn on your instrument by closing the battery door.

12

Removing your instrument

Turn off the instrument by opening the battery door. Remove the hearing instrument from behind your ear, allowing it to hang next to your ear. Using your thumb and index finger, gently pull the ear mould(or eartip) (not the instrument or the tubing) loose from your ear. Remove the ear mould(or eartip) completely by gently twisting it.

Daily Maintenance

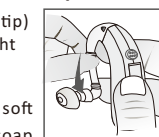
Keep your hearing instrument clean and dry. Wipe the case with a soft cloth or tissue after use to remove oil or moisture. If the instrument has been exposed to high humidity or perspiration, enclose it (with the ear mould) in a sealed container together with a drying agent (desiccant) overnight. Consult your hearing care professional concerning which drying agent to use.

To avoid the need for unwarranted repairs: Never immerse the instrument in water or other liquids since this may cause permanent damage to the circuitry. Protect your hearing instrument from rough handling, and avoid dropping it on hard surfaces or floors. Do not leave the instrument in or near direct heat or sunlight since excessive heat can damage the instrument or casing.

13

Cleaning the ear mould(or eartip)

First, remove the tubing and ear mould (or eartip) from the hearing instrument. Keep left and right instrument separated.



Remove earwax with the cleaning brush and a soft cloth. If necessary, use a mild solution of soft soap and water or a special cleaning solution.

Rinse the ear mould (or eartip) with water.

Note: Do not use water or other liquids on the hearing instrument itself.

Dry the ear mould with a cloth. Remove water drops from the tubing and ear mould (or eartip). A special device is available for this from your hearing care practitioner. Ensure that the ear mould (or eartip) and tubing are completely dry before attaching them to the hearing instrument. Make sure that you connect the correct ear mould(or eartip) to their corresponding instruments.

Replacing the tube

Ask your hearing care practitioner to replace the ear mould (or eartip) tubing if it becomes stiff or changes colour.

14

General Precautions

Consult a physician if you find a foreign object in your ear canal, if you experience skin irritation or if excessive earwax accumulates with the use of the hearing instrument. Different types of radiation, e.g. from NMR, MRI or CT scanners, may damage the hearing instrument. Therefore, do not wear the hearing instrument during these or other corresponding scanning procedures. Other types of radiation (burglar alarms, room surveillance systems, radio equipment, mobile telephones, etc) contain less energy and will not damage the hearing instrument. They could however momentarily affect the sound quality or create strange sounds from the hearing instruments. Warning: Do not wear the hearing instrument in mines or other explosive areas, unless those areas are certified for hearing instrument use. Warning to hearing care practitioners Special care should be exercised in selecting and fitting hearing instrument(s) whose maximum sound pressure level exceeds 132 dB SPL with an IEC 60711: 1981 occluded ear simulator, because there may be a risk of impairing the remaining hearing of the hearing instrument user.

15

Working condition

Temperature should not exceed limits of -20°60°Celsius at a relative air humidity of 85% for extended periods during transportation and storage. Air pressure between 500 and 1100 hPa is not detrimental to the instrument.

Technical Data Instrument

Maximum Output IEC-6011 8-7/2005(2cc-coupler)



Please ask your local hearing care professional concerning disposal of your hearing instrument

16

Hearing aid