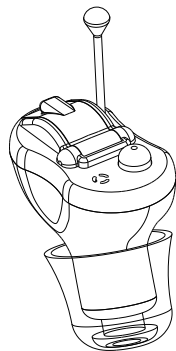


USER GUIDE

Hearing aid



MINI IN-THE-EAR PERSONAL HEARING SYSTEM

Congratulations on the purchase of your new hearing instrument!

This booklet describes the features available for the MCIC (Mini In-The-Ear) models in the Rhyme product line. The available options depend on the hearing instrument model; your hearing care professional will highlight the features of your particular hearing instrument.

Intended use

Hearing instrument is a kind of electronic devices which amplifies sound from your surroundings. It is used to help hearing impaired people recover hearing ability by compensating hearing loss. Your MCIC is only one type of hearing instruments

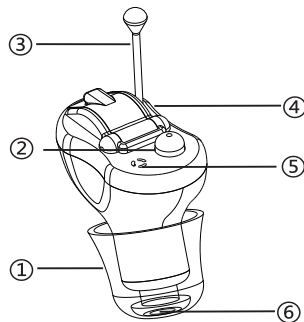
Precautions

For patients with middle ear infection, it's suggested not to wear hearing instrument until cured or follow the doctor's advice. Please consult your hearing healthcare professional first if you have any questions about your hearing instrument.

Contents

Features.....	3
How to Wear Your Hearing Instrument.....	4
ON And OFF Function.....	5
Program setting.....	6
Volume setting.....	7
Replacing the battery.....	8
Battery Caring.....	9
Cleaning.....	9
Cleaning the instrument.....	10
Troubleshooting Guide.....	11
Working Condition.....	12
Technical Data.....	12

Features



① Dome	④ Battery door
② Push button	⑤ Microphone inlet
③ Removal handle	⑥ Sound outlet

Operation

How to wear Your Hearing Instrument

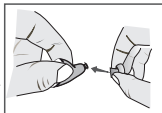
Hearing instrument is suitable for both ears. L&R logo on the shell stand for the LEFT ear and the RIGHT ear. Make sure you wear the right one.

Attach the dome

The Dome is an earpiece used to secure the MCIC comfortably in you ear canal and to protect the sound outlet from ear-wax intrusion.

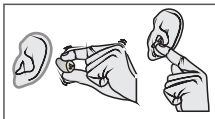
Your hearing healthcare professional should have set the right dome for you.

Push the dome over the grooves on the tube to mount it.



To insert MCIC:

1. Hold the hearing instrument with the removable handle at the bottom and the white dot at the top between your thumb and forefinger.
2. Gently insert the canal portion of the hearing instrument into your ear by pushing back and tucking the hearing instrument completely into the right place with you forefinger



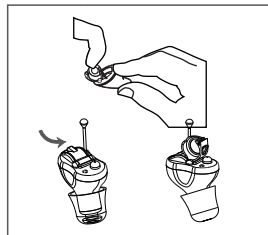
NOTICE:

Before placing the MCIC into your ear, ensure that the battery is inserted properly and the battery door is closed securely.

ON And OFF Function

Turn on your hearing instrument by closing the battery door completely.

Turn off your hearing instrument by opening the battery door slightly.



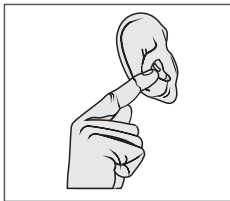
NOTICE:

Never force the battery door open or closed

Push Button

1. Program setting

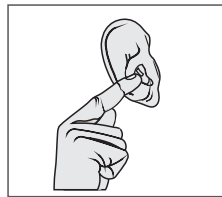
- When the hearing instrument is turned on, the instrument will revert to the previous setting of program when powered on again.
- The additional settings that are preprogrammed for your specific needs are accessed by the memory switch. Long time push the memory switch for 3seconds, your instrument will move to the next program. the sequence is 1, 2, 3, 1...
- Your hearing instrument will alert you to help you identify which program you are using. When you select program 1 you will hear one beep, program 2 will emit two beeps, and so on.



NOTICE:
LONG TIME PUSH THE MEMORY SWITCH FOR 6 SECONDS
TO STANDBY MODE

2. Volume setting

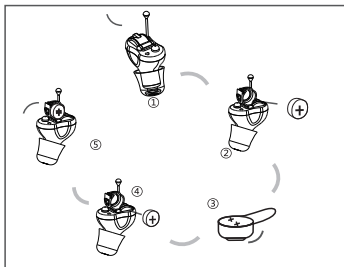
- When the hearing instrument is turned on, the instrument will revert to setting of volume when powered on again.
- The additional settings that are preprogrammed for your specific needs are accessed by the memory switch. Each time push the memory switch, the instrument will increase the volume one step, the sequence is Min to Max to Min...
- Your hearing instrument will alert you to help you identify volume you are setting. When you set volume one step, you will hear one beep, When you reach the maximum volume, you will hear two rapid beeps.



NOTICE:
LONG TIME PUSH THE MEMORY SWITCH FOR 3 SECONDS
TO MOVE THE NEXT PROGRAM

Replacing the battery

1. Switch off the hearing instrument by opening the battery door.
2. Remove the old battery.
3. Remove the protective foil from the new battery.
4. Insert a new battery, ensure that the plus (+) sign on the battery is facing upwards as shown below.
5. Close the battery door.



Important: Handle the battery door gently. The operation requires only a minimum of force. If there is any resistance when closing the battery door, ensure that the battery is correctly inserted. The door will not close if the battery is upside down.

Battery caring

The performance of hearing instrument greatly depends on the quality of the battery using.

- 1) It is important to use high-quality batteries. With reliable high, quality batteries, you can avoid periodic hearing instrument failures.
- 2) It is also important that the batteries are well packed before use, Each battery is therefore provided with an adhesive label which ensures the battery is sealed and fresh till use.
- 3) Never leave an exhausted battery in the hearing instrument. Exhausted battery may leak and it would damage the instrument.

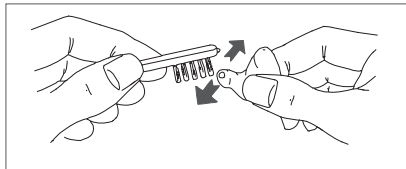
Cleaning

Ear wax is one of the main causes of problems with hearing instrument. Filter and other devices are used for preventing wax from entering the instrument. Use the wax protection system and tools to clean any accumulated wax each day. Replace the wax filter regularly.

Cleaning is easier when ear wax is dry in the morning before you insert the instrument to your ear.

Cleaning the instrument

Clean your instrument with a soft, dry cloth and a small brush. Do the cleaning on a soft table to avoid damage or scratch in case the instrument falls.



Do not use water or other fluids

Troubleshooting Guide

No sound	
<ul style="list-style-type: none"> • Not turned on • Dead battery • Battery improperly inserted • Sound outlet may be blocked • Volume may be too low 	<ul style="list-style-type: none"> • Turn on • Replace battery • Insert battery properly • Consult your hearing care professional • Adjust VC control
Intermittent sound	
<ul style="list-style-type: none"> • Battery may be low or dead • Waxstop may be blocked • There may be poor battery contact 	<ul style="list-style-type: none"> • Replace battery • Consult your hearing care professional • Consult your hearing care professional
Too much bass	
<ul style="list-style-type: none"> • Battery may be low or dead 	<ul style="list-style-type: none"> • Replace battery
Low volume	
<ul style="list-style-type: none"> • Hearing instrument may be loose • You may have excessive cerumen • Volume may be turned down 	<ul style="list-style-type: none"> • Remove and reinsert instrument • Consult your hearing care professional • Adjust VC control
Whistling feedback	
<ul style="list-style-type: none"> • Excessive cerumen • Hearing instrument may be loose • There may be poor battery contact 	<ul style="list-style-type: none"> • Clean vent • Remove and reinsert instrument • Consult your hearing care professional

If you experience additional problems not addressed in this guide, please contact your hearing care professional.

Appendix

Working Condition

Temperature should not exceed limits of - 200/600 Celsius at a relative air humidity of 85% for extended periods during transportation and storage. Air pressure between 500 and 1100 hPa is not detrimental to the instrument.

Technical Data standard

Maximum Output IEC-601 1 8-7/2005(2cc-coupler)



Please ask your local hearing care professional concerning disposal of your hearing instrument