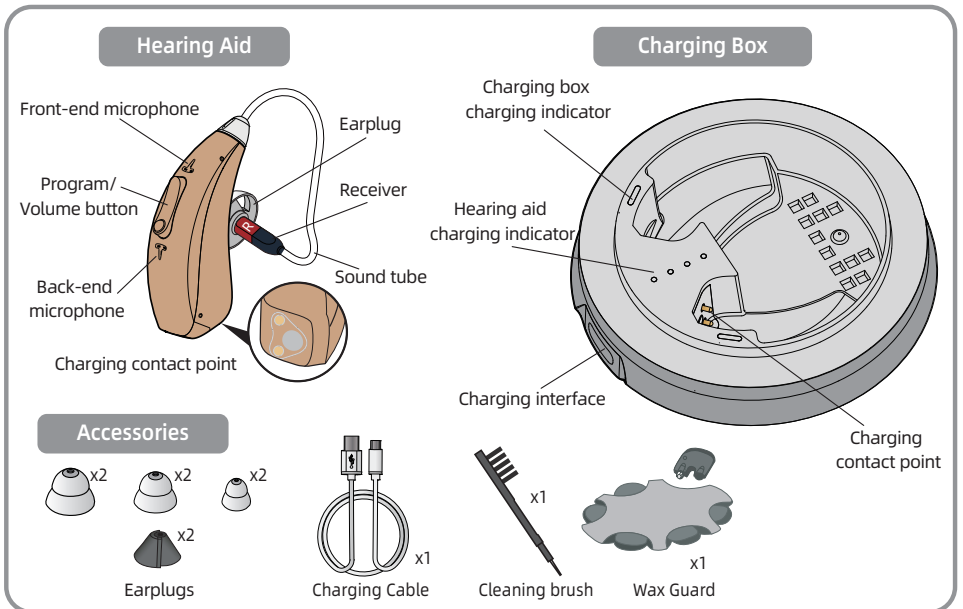


Quick Operation Guide

WOLONG - CR435S B
RIC hearing aid

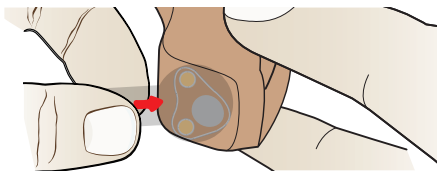


Please download and install "HA-Fit" APP first.

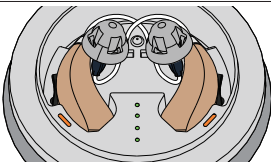


Prepare for Use

Charge the Device



1 Remove the film

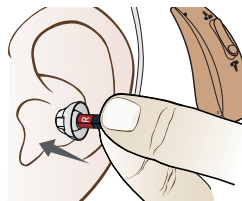


Hearing aid charging indicator

L	Orange light	R	Light off
	Charging		Full charged

2 Put the devices into the charge case then connect the type-C/USB cable to charge

Wearing Test



1 Gently insert the earplug into the ear canal.



2 Place the hearing aid behind the ear. The curve of the sound tube should fit comfortably on top of your ear.

If the earplugs not fitting, replace it.

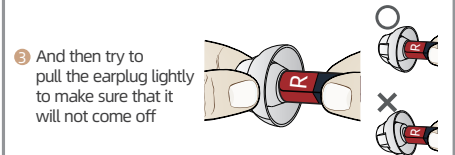
Replace the earplugs



1 Choose a fitting dome



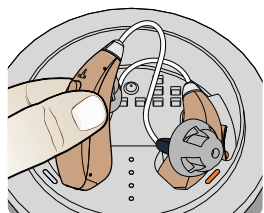
2 Insert the earplug straight and insert it gently



3 And then try to pull the earplug lightly to make sure that it will not come off

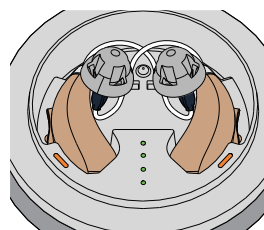
Use Guidance

Power on / off



Automatic on

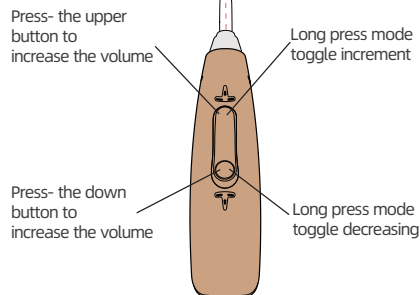
Turn on--device be take out of the charging case



Automatic off

Turn off--device be put into the charging case

Mode / Volumes



Press	3 beeps indicator the MAX or MIN volume level
Long Press	1 beep means mode 1(Quite mode) 2 beeps mean mode 2(Noise cancelling mode) 3 beeps mean mode 3(Outdoor mode) 4 beeps mean mode 4(Music mode)

Low Battery Reminder



There are low battery warning signal beep sounds every one minute until the battery runs out. So please charge the hearing aids when you hear the beep.

[HA-Fit APP]

How to control APP

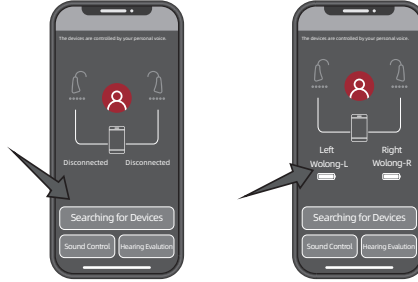
Please download and install "HA-Fit" APP first.



Android & IOS

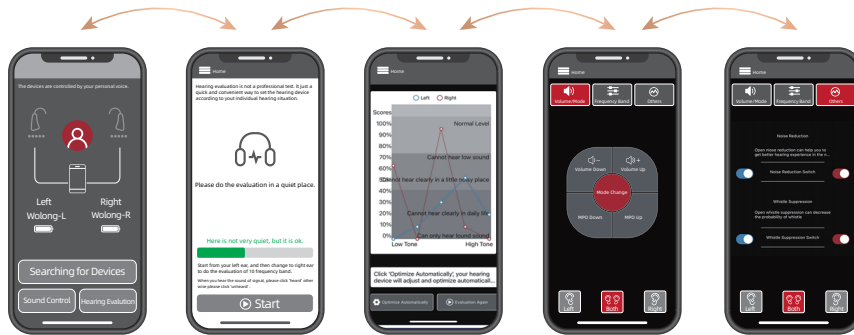
Connect APP with Bluetooth

- Step 1: Please turn on the hearing aid.
- Step 2: Be sure Bluetooth is enabled on your phone.
- Step 3: Open the "HA-Fit" APP.
- Step 4: Click the "Searching for Devices" button.



After "searching for devices", the HA-Fit APP will automatically connect to the hearing aid, and the successful connection status is shown in the figure. (Connected "Wolong...")

Hearing Evaluation



Get your hearing tested and optimize it accordingly

- 1 Please click "Hearing evaluation" to start your hearing loss test in a quiet room according to APP system directives.
- 2 Follow the prompts to complete your hearing evaluation.
- 3 Click 'Optimize Automatically' to reset the device based on your finished hearing evaluation.

Adjust the volume, modes and MPO:

1. Press the button on app directly
 2. Adjust volume: Short press the button on device
 3. Adjust modes: press Mode Change on the button on device to change programs.
- P1: Quiet mode, P2: Noise cancelling mode, P3: Outdoor mode, P4: Music mode

Turn on Noise Reduction Function

Please turn on the function of Noise Reduction and Whistle suppression for hearing clearly

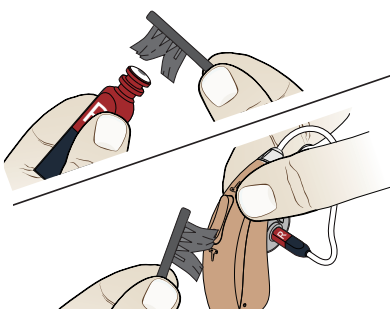
Please click "hearing evaluation" to start your hearing loss test in a quiet room according to APP system directives.

Daily maintenance

Care and maintenance

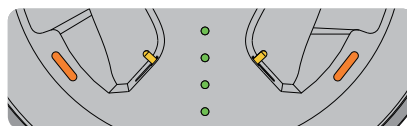
Keep the hearing aids clean at all time. After use, remove the earplug and clean the sound hole with the brush. Wipe off oil and moisture with tissue paper, etc., and keep the product dry.

1. Clean the sound hole with the brush.



2. Clean the microphone with a cleaning brush.

Hearing aid Charging Guide



Charging box battery indicator

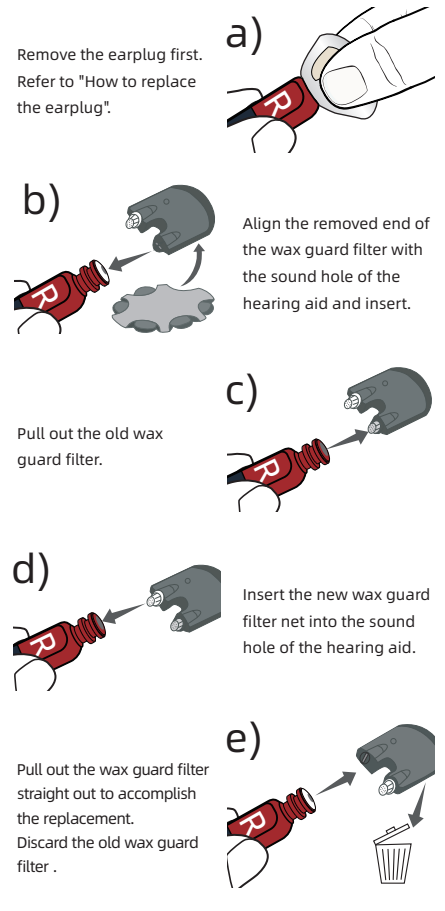
100%	75%	50%	25%

When the power of the charging box is less than 25%, the indicator light flashes.

	Hearing Aid	Charging Box
Battery Specifications	20mAh Lithium Battery	280mAh Lithium Battery
Charging Time	≤3h	≤3h
Rated Working Time	≥18h	10 Times for Single Unit 5 Times for Two Units

How to replace the earwax guard

The wax guard filter net is located in the sound hole of the hearing aid which can effectively prevent the cerumen from entering into the hearing aid to cause damage to the hearing aid. Replace the earwax filter every 3 months. Do not reuse the used filter.



Troubleshooting

Problem	Possible Solution
Sound is distorted	① Decrease volume. ② Charge the product. ③ Clean the dome.
The product emits whistling sounds	① Reinsert the Earplugs until it fits tightly. ② Decrease volume. ③ Clean the Earplugs.
The product does not work	① Change to different size of Earplugs. ② Check whether the microphone is damaged or not. ③ Charge the product.
Can't charge	① Clean the charging contacts. ② Make sure that the charging contacts are in good contact.

Consult your Hearing Care Professional or directly contact to us if the problem cannot be solved.

Notes and Tips

1. This product is not waterproof.
2. If the hearing aid is not used for a long time, please charge it every 1-2 months to avoid damage to the battery.
3. The adapter provided in the package is only for hearing aids, please do not use it to charge other devices
4. Store in a well-ventilated and dry place.
5. Do not use in or near an X ray or MRI machine.

All pictures are for reference only